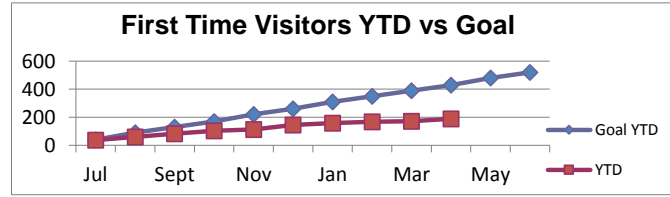
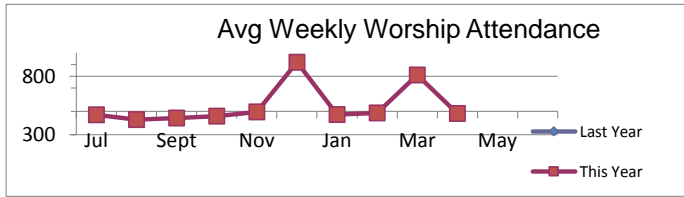


## Country Club Christian Church For the Period Ended April 2017

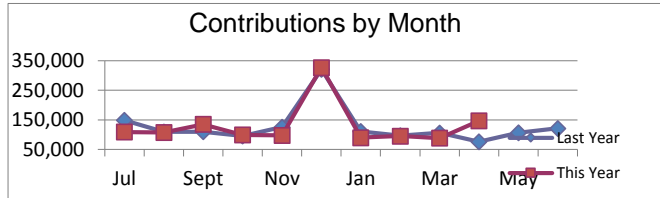
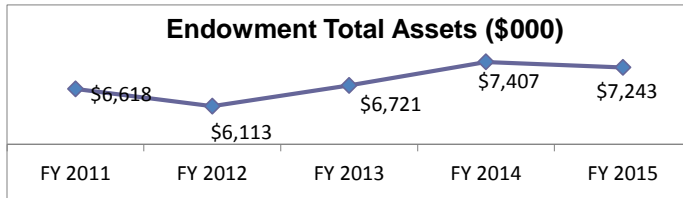
Weekly Worship Attendance	
Average Last Month	588
Last Year: Average Last Month	482
Average Year to Date (Fiscal Year)	526
Last Year: Average Year to Date (Fiscal Ye	547

Member Growth	
<b>First Time Visitors</b>	
Total Last Month	18
Goal Last Month	40
Total Year to Date (Fiscal Year)	189
Goal: Total Year To Date(Fiscal Year)	430
<b>New Members</b>	
Total Year to Date	38
Annual Goal Total	130



Financial Capital	
<b>Capital Campaign Dollars Received</b>	\$4,720,619
Capital Campaign Pledges Outstanding	\$359,700
<b>Endowment</b>	
YTD Transfers ( Fiscal Year)	\$160,463
Endowment Contributions Fiscal Year To Date	\$14,796
Transfers booked monthly but actual \$ distributions are quarterly	

Financial Stability (Fiscal Year)	
Checking Accounts	\$649,921
<b>Contributions Last Month</b>	\$146,713
Contributions Last Month: Last Year	\$76,021
Contributions Last Month: Budget	\$75,237
<b>YTD Contributions</b>	\$1,295,663
YTD Contributions: Last Year	\$1,275,521
YTD Contributions: Budget	\$1,234,315
<b>YTD Net Income</b>	\$98,045



98% or Greater of Goal
90-97.9% of Goal
89.9% or less of Goal