

## Country Club Christian Church For the Period Ended April 2019

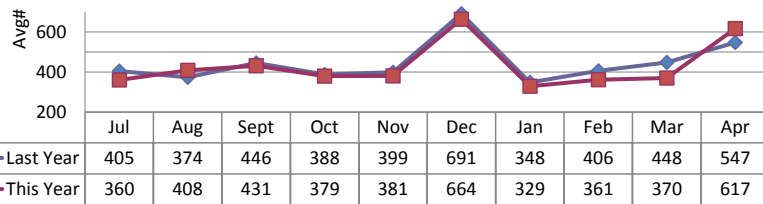
### Weekly Worship Attendance

Average Last Month	617
Last Year: Average Last Month	547
Average Year to Date (Fiscal Year)	430
Last Year: Average Year to Date (Fiscal Year)	445

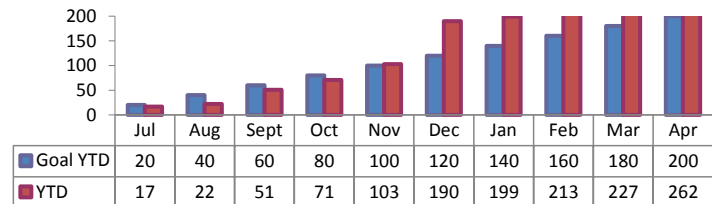
### Member Growth

<b>First Time Visitors</b>	
Total Last Month	35
Goal Last Month	40
Total Year to Date (Fiscal Year)	262
Goal: Total Year To Date(Fiscal Year)	200
<b>New Members</b>	
Total Year to Date	43
Annual Goal Total	100

### Avg Weekly Worship Attendance



### First Time Visitors YTD vd Goal



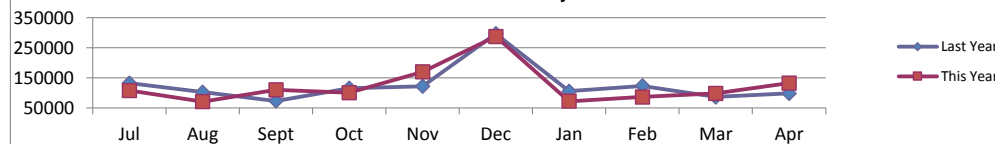
### Endowment Trust Audited Funds

	2014-2015	2015-2016	2016-2017	2017-2018
Beginning Fund Balance	7,407,268.10	7,220,646.03	6,948,867.20	7,322,425.57
Contributions	390,522.25	148,186.72	17,044.73	186,160.34
Gains	-161,968.92	-27,940.86	660,082.39	567,128.63
Grants	415,175.40	392,024.69	276,285.76	420,134.90
Ending Fund Balance	7,220,646.03	6,948,867.20	7,349,708.57	7,655,579.64

### Financial Stability (Fiscal Year)

Checking Accounts	\$379,498
<b>Contributions Last Month</b>	\$132,306
Contributions Last Month: Last Year	\$98,112
Contributions Last Month: Budget	\$110,654
<b>YTD Contributions</b>	\$1,243,167
YTD Contributions: Last Year	\$1,255,768
YTD Contributions: Budget	\$1,306,023
<b>YTD Net Income</b>	(\$85,561)

### Contributions by Month



98% or Greater of Goal

90-97.9% of Goal

89.9% or less of Goal