

Country Club Christian Church For the Period Ended March 2020

Weekly Worship Attendance*

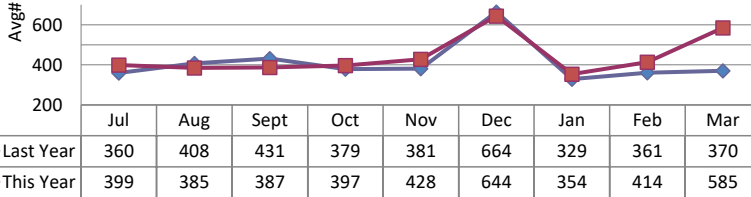
Average Last Month	585
Last Year: Average Last Month	370
Average Year to Date (Fiscal Year)	444
Last Year: Average Year to Date (Fiscal Year)	409

*3/1 & 3/8 in person; 3/15, 3/22, & 3/29 online only

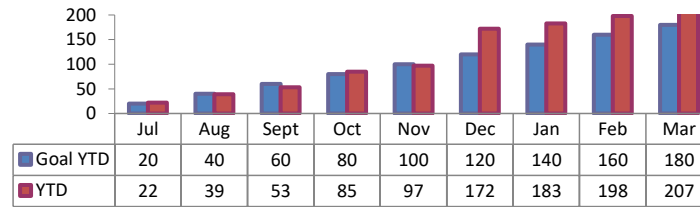
Member Growth*

First Time Visitors	
Total Last Month	9
Goal Last Month	40
Total Year to Date (Fiscal Year)	207
Goal: Total Year To Date(Fiscal Year)	180
New Members	
Total Year to Date	14
Annual Goal Total	100

Avg Weekly Worship Attendance



First Time Visitors YTD vd Goal



Endowment Trust Audited Funds

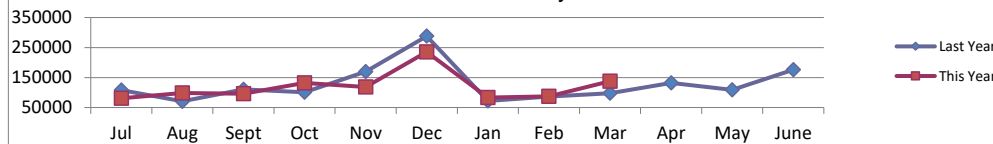
	2015-2016	2016-2017	2017-2018	2018-2019*
Beginning Fund Balance	7,220,646.03	6,948,867.20	7,322,425.57	7,655,580.64
Contributions	148,186.72	17,044.73	186,160.34	439,104.04
Gains	-27,940.86	660,082.39	567,128.63	477,752.89
Grants	392,024.69	276,285.76	420,134.90	411,869.09
Ending Fund Balance	6,948,867.20	7,349,708.57	7,655,579.64	8,160,568.48

*18-19 numbers are not audited

Financial Stability (Fiscal Year)

Checking Accounts	\$369,825
Contributions Last Month	\$137,364
Contributions Last Month: Last Year	\$98,040
Contributions Last Month: Budget	\$98,603
YTD Contributions	\$1,082,637
YTD Contributions: Last Year	\$1,110,538
YTD Contributions: Budget	\$1,171,165
YTD Net Income	(\$13,521)

Contributions by Month



98% or Greater of Goal

90-97.9% of Goal

89.9% or less of Goal